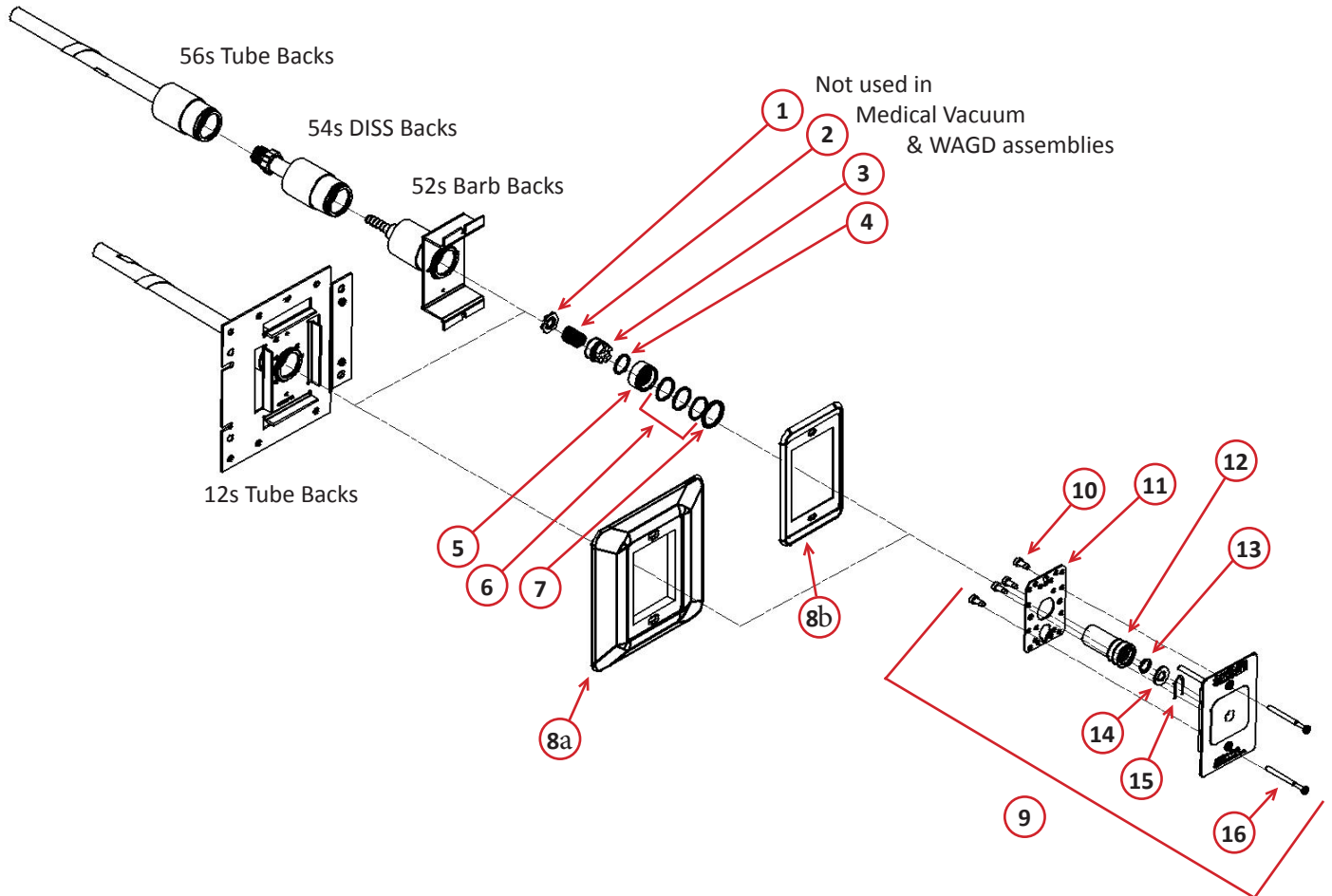


**180° Ohio/Ohmeda Style Outlets - PX-XQ Series**

Oxygen Outlet Shown



## Bill of Material

Item	Part Number	Description	Quantity	Note
1	PX-XC1000-7	Spacer Washer	1	
2	PX-13-1003R	Spring	1	
3	PX-XC1000-5R	Poppet	1	
4	PX-11-0050R	Poppet O-Ring	1	A
5	PX-XC1000-6R	Insert Sleeve	1	
6	PX-11-0047R	Sleeve O-Ring	3	B
7	PX-12-1045R	Retaining Ring	1	
8a	PX-XC1000-9R	Finishing Kit Trim Plate	1	
8b	PX-XC1000-10R	Trim Plate Cover	1	
9	See Below	PX-XQ Finishing Kit Assemblies	See Below	
10	PX-12-3084R	Mounting Screws	4	
11	PX-AQ1000-12R	Indexing Housing Cover	1	
12	PX-XQ1000-DR	Front Body Assembly	1	
13	PX-11-0005R	Front Body O-Ring (Orange)	1	C
14	PX-12-1002R	Plated Washer	1	
15	PX-13-9001R	Wire Form Spring	1	
16	PX-30-0003	Mounting Screw Kit	1	
<b>Item 9 Outlet Finishing Kits (all kits are assembled with items 10-16)</b>				
	PX-XQ1004-A	Nitrous Oxide	1	
	PX-XQ1008-A	Carbon Dioxide	1	
	PX-XQ1016-A	Medical Air	1	
	PX-XQ1022-A	Medical Vacuum	1	
	PX-XQ1024-A	Oxygen	1	
	PX-XQ1032-A	Waste Anesthetic Gas Disposal (WAGD)	1	
<b>Primary Valve Kit (kit includes item 12 preassembled plus items 13-15)</b>				
	PX-XQ1100RC	Primary Valve Kit for all gases	1	
<b>Secondary Valve Kit</b>				
	PX-XC1000KR	Secondary Valve Kit for all gases except Medical Vacuum & WAGD (kit includes items 1 through 6 )	1	
	PX-XC1022KR	Secondary Valve Kit for Medical Vacuum & WAGD (kit includes items 4 through 6 )	1	

**NOTE:** A – Install O-Ring item 4 on Poppet item 3  
 B – Install O-Rings item 6 onto Insert Sleeve item 5  
 C – Insert O-Ring item 13 into Front Body item 12