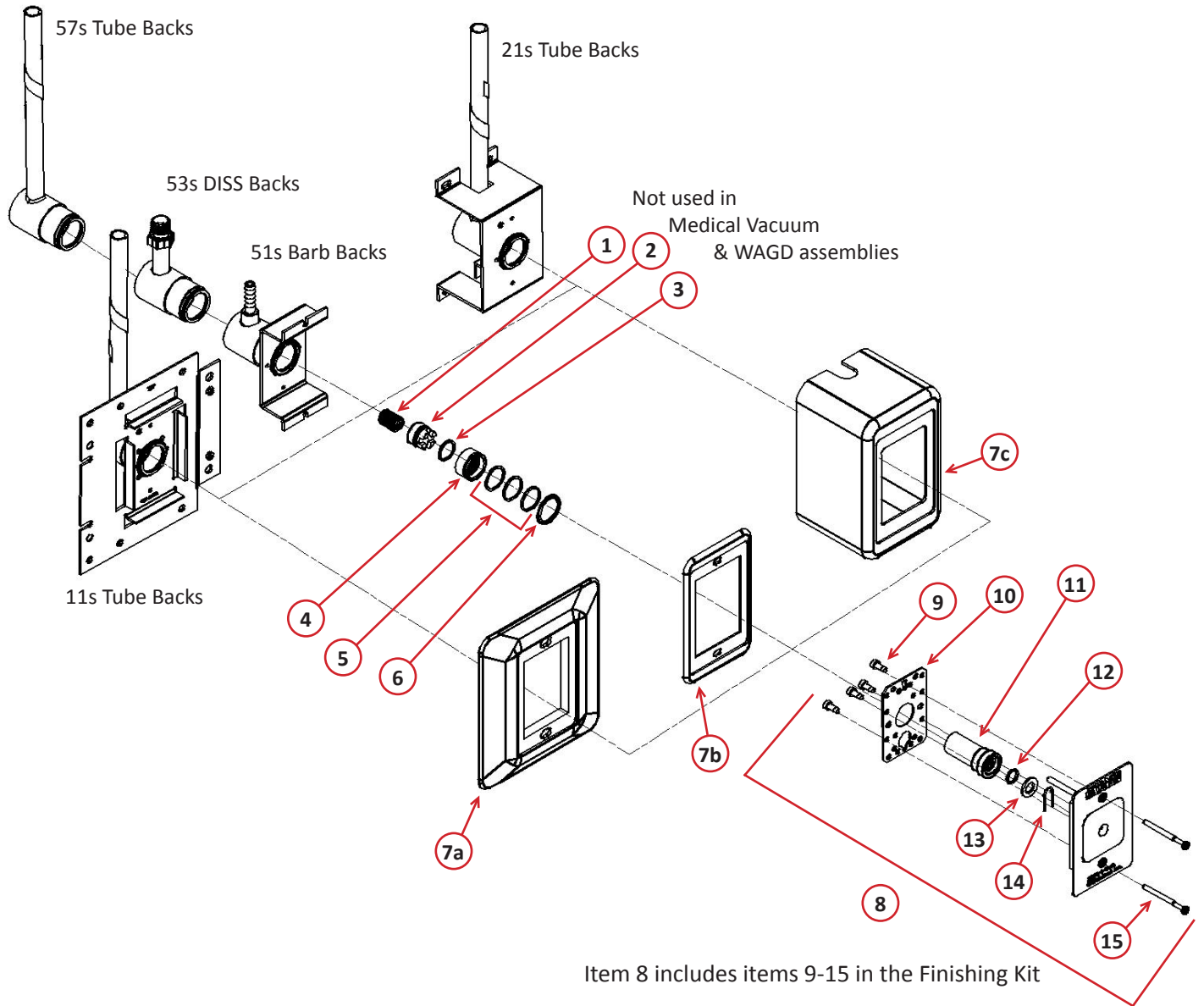


90° Ohio/Ohmeda Style Outlets - PX-XQ Series

Oxygen Outlet Shown



**Bill of Material**

Item	Part Number	Description	Quantity	Note
1	PX-13-1003R	Spring	1	
2	PX-XC1000-5R	Poppet	1	
3	PX-11-0050R	Poppet O-Ring	1	A
4	PX-XC1000-6R	Insert Sleeve	1	
5	PX-11-0047R	Sleeve O-Ring	3	B
6	PX-12-1045R	Retaining Ring	1	
7a	PX-XC1000-9R	Finishing Kit Trim Plate	1	
7b	PX-XC1000-10R	Trim Plate Cover	1	
7c	PX-XC2100-3R	Finishing Kit Housing (Surface Mount)	1	
8	See Below	PX-XQ Finishing Kit Assemblies	See Below	
9	PX-12-3084R	Mounting Screws	4	
10	PX-AQ1000-12R	Indexing Housing Cover	1	
11	PX-XQ1000-DR	Front Body Assembly	1	
12	PX-11-0005R	Front Body O-Ring (Orange)	1	C
13	PX-12-1002R	Plated Washer	1	
14	PX-13-9001R	Wire Form Spring	1	
15	PX-30-0003	Mounting Screw Kit	1	
<b>Item 8 Outlet Finishing Kits (all kits are assembled with items 9-15)</b>				
	PX-XQ1004-A	Nitrous Oxide	1	
	PX-XQ1008-A	Carbon Dioxide	1	
	PX-XQ1016-A	Medical Air	1	
	PX-XQ1022-A	Medical Vacuum	1	
	PX-XQ1024-A	Oxygen	1	
	PX-XQ1032-A	Waste Anesthetic Gas Disposal (WAGD)	1	
<b>Primary Valve Kit (kit includes item 11 preassembled plus items 12-14)</b>				
	PX-XQ1100RC	Primary Valve Kit for all gases	1	
<b>Secondary Valve Kit</b>				
	PX-XC1000KR	Secondary Valve Kit for all Gases Except Medical Vacuum & WAGD (kit includes items 1 through 6 )	1	
	PX-XC1022KR	Secondary Valve Kit for Medical Vacuum & WAGD (kit includes items 4 through 6 )	1	

**NOTE:** A – Install O-Ring item 3 on Poppet item 2  
 B – Install O-Rings item 5 onto Insert Sleeve item 4  
 C – Insert O-Ring item 12 into Front Body item 11